
Connecting the Dots Among SBC Professionals: The Future of Virtual Engagement Among Global Communities of Practice

An Interactive Panel



INTERNATIONAL
SBCC
SUMMIT 2022

Session Outline

- Global Communities of Practice Overviews
 - SBC Working Group of the RBM Partnership to End Malaria
 - Boost Community
 - SBC for Service Delivery
 - Springboard
- Panel Discussion + Q&A
- Small Group Discussions
- Report Back & Closing



Small Group Discussions

- Small groups will discuss one of the following topics:
 - a. Creating value and driving impact
 - b. Ensuring representative communities
 - c. Maintaining momentum post-COVID
 - d. Challenges of navigating multiple online communities and platforms



Social and Behaviour
Change Working Group



**SOCIAL & BEHAVIOR CHANGE
FOR SERVICE DELIVERY**

COMMUNITY OF PRACTICE



Communities of Practice

2022 International SBCC Summit: *Future of Virtual Engagement Panel*

Maintaining Momentum of Malaria SBC through a Global Technical Working Group

RBM SBC WG Core Objectives



Technical Guidance

Promote **theory-informed, evidence-based** programming focused on **behavior change** at the country level



Coordination and Networking

Forum for exchange of malaria SBC **best practices** and experiences among **NMCPs** and other **SBC professionals**



Making the Case

Be a voice to call for political, social, and financial resources to SBC as a core component of malaria control that cuts across all technical areas

Engagement in English, French, and Portuguese

60+ countries joining calls over the last 2 years

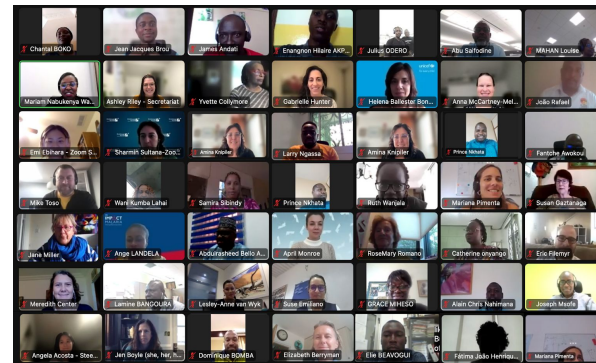
RBM SBC WG Gems

- Secretariat and Elected, Diverse Steering Committee
- Virtual Calls | Webinars | In-Person | Springboard Community
- Deliverables-Focused Workstreams
- Engagement in English, French, & Portuguese
- Lusophone & Francophone Ambassador Program
 - Special Networking Sessions | Communicating Needs to Leadership
- 15+ Technical Guidance Documents
 - Monitoring & Evaluation | Strategy Guidance | Cutting-Edge Topics (COVID, Malaria Vaccine)
- Regular Membership Polling
 - Future Workstreams | Membership Priorities | Call Topics



RBM SBC WG Challenges/Sticky Issues

- **Funding and bandwidth** for members to work on technical guidance and other requests
- How do we **measure success**?
 - What does it look like?
 - What is a reasonable expectation of member participation in between meetings?
- How do we **maintain momentum** through virtual connection as in-person engagement becomes more possible?
 - In-Person vs Virtual vs Hybrid





**Social and Behaviour
Change
Working Group**

Thank you - Stay in Touch!

Website: www.bit.ly/RBMSBCWG

Email List: www.bit.ly/RBM_SBCWG_EMAIL

Secretariat: Ashley.Riley@jhu.edu



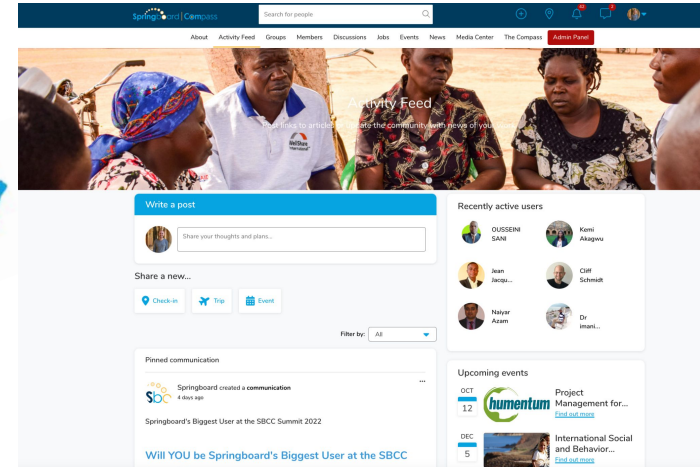
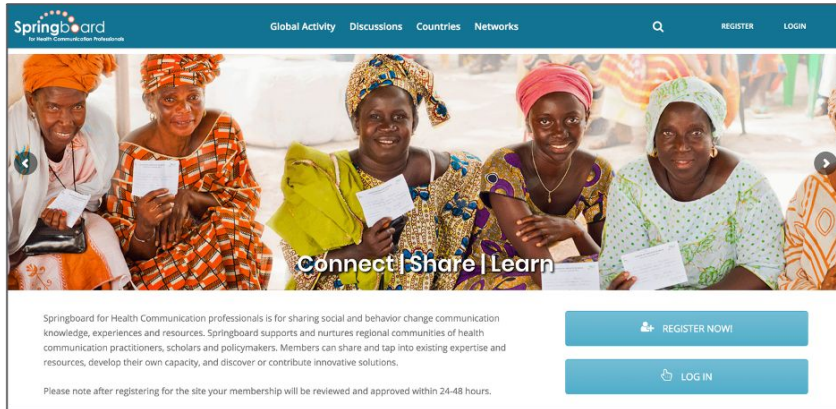
Creating a Global SBC Village

**Challenges, Opportunities, and Experiences of Springboard,
an Online Community for SBC Professionals**



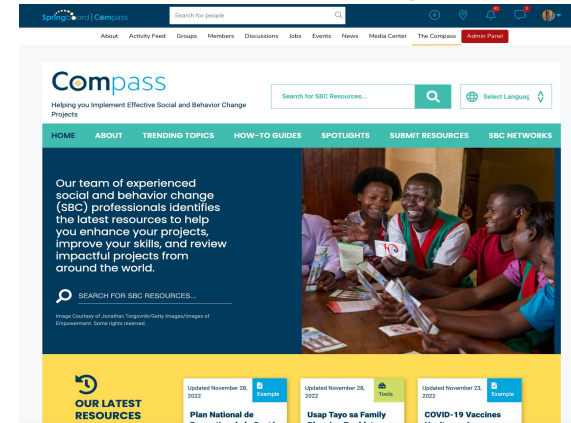
Springboard's Objectives

Springboard was launched in **April 2014** with a mission to foster knowledge exchange, networking, and learning among social and behavior change (SBC) professionals.



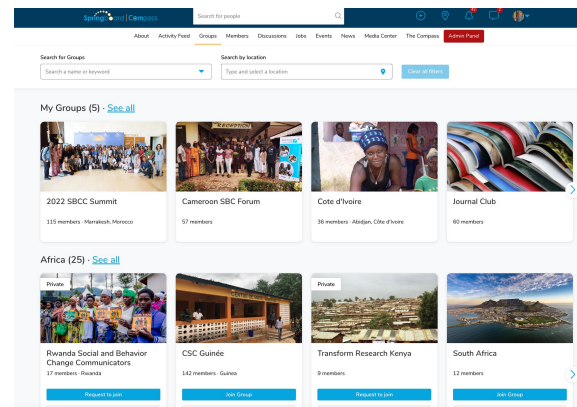
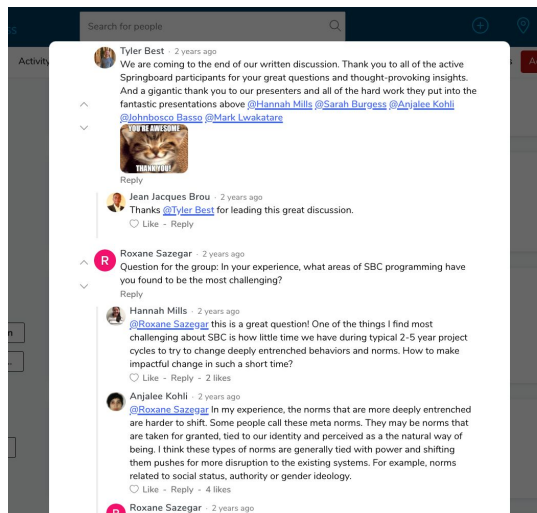
Springboard's Gems

- Nearly 5,000 members from over 115 countries
- Strong sense of community
- Growing Francophone community (nearly 1,000)
- Integration with the Compass, a curated SBC repository



Springboard's Gems

- Opportunities for knowledge exchange through learning events (webinars, written discussions) and peer-to-peer learning
- Space for hosting online communities via the Groups function



Sticky Issues



- Ensuring diverse voices are represented and participate in knowledge sharing
- Technical limitations of the platform vs. users expectations
- Engagement preferences in a rapidly changing digital world (written vs live discussions, length of sessions etc.)
- Reconciling our measures of success vs. user experience and content





A global community where
immunization professionals
connect, learn and lead



BOOST COMMUNITY:

**a global community of immunization
professionals**

<https://boostcommunity.org>

Sign up today!



OUR OBJECTIVES

Boost is a global community that connects immunization professionals to peers, support and resources to learn and grow and equips professionals to lead in challenging situations.



Connect

Boost is a global community where immunization professionals can connect with peers and stakeholders and expand their professional network.



Learn

Boost provides access to experts and resources to help immunization professionals learn skills to build capacity and advance their careers.

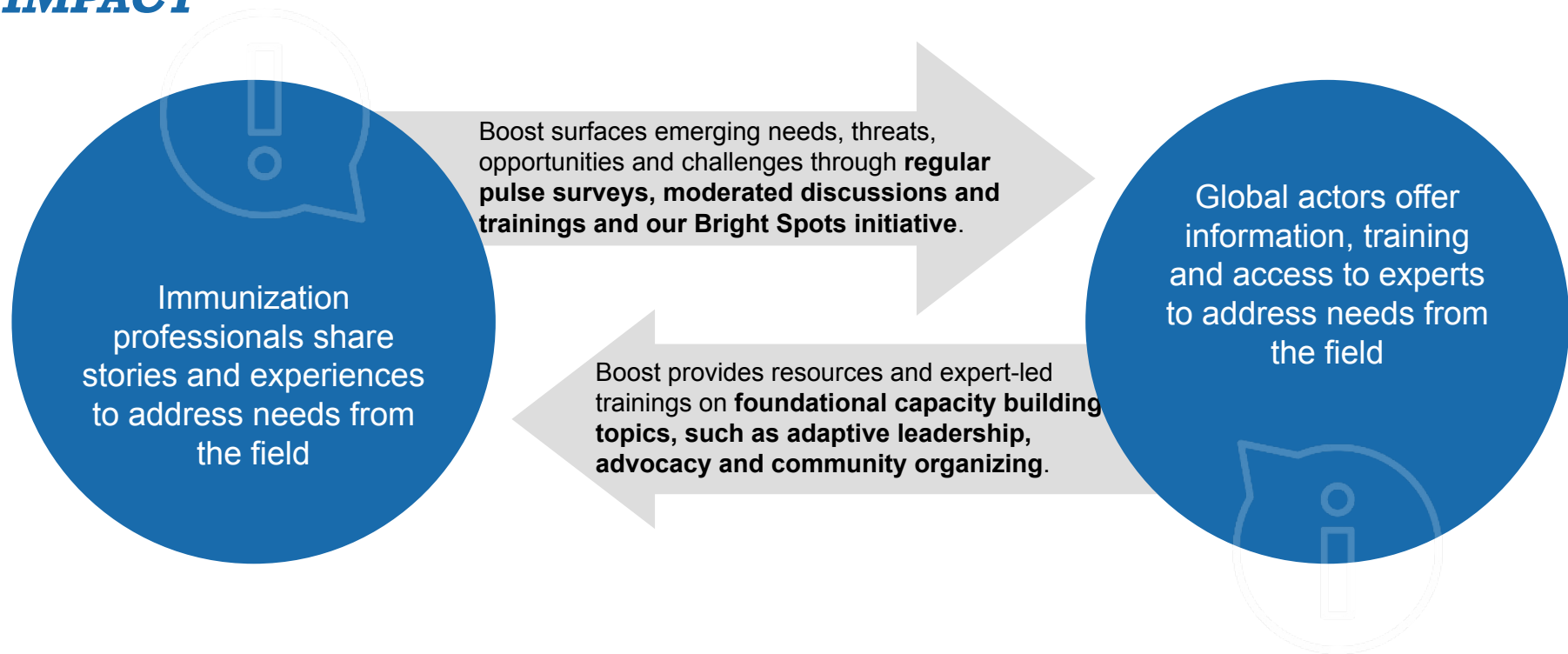


Lead

Boost is designed to help immunization professionals lead immunization programs in challenging and uncertain contexts.

KEEPING IMMUNIZATION PROFESSIONALS AT THE CENTER OF OUR WORK: ***BOOST DELIVERS GLOBAL REACH WITH LOCAL IMPACT***

Boost acts as a bridge, sharing information between immunization professionals at all levels of the system and global actors.



GEMS

BEHAVIORAL SCIENCE – IMMUNIZATION NETWORK

A group of immunization practitioners and social and behavioral science experts exploring how to apply behavioral science tools, methods and approaches to the delivery of immunization activities.



827

Global
members



85

Countries
represented



<https://boostcommunity.org/topics/13897>



JSI RESEARCH & TRAINING INSTITUTE, INC.



A Behavior Science for Immunization Capacity Assessment revealed that:

100%

Believe using behavioral science is important to achieving their country's immunization goals.

and yet...

54%

Have never used behavioral informed models for immunization programming.

The Behavioral Science Network supports members to:

- Learn how **behavioral science instruments, tools and interventions** have been adapted and implemented to address specific immunization challenges.
- **Connect with immunization peers and behavioral science experts** to share learnings on what is working for country-level implementation to strengthen immunization programming.
- **Access skill building seminars and curated resources** on using behavioral science tools to improve immunization programming.
- **Contribute to guidelines** for adaptation and implementation of behavioral science tools for immunization interventions.

FOUNDATIONAL CAPACITY BUILDING

Recognizing the quantity of high-quality technical training, Boost's core content offerings focus on foundational capacity building including adaptive leadership, advocacy and problem solving.

Community organizing is different from traditional advocacy which usually involves well-trained experts speaking on behalf of people in need. Community organizing **focuses on developing and building cooperative power of the community itself to both address the challenges and advocate directly without intermediary organizations or professionals.**

Adaptive Leadership emerged from 40+ years of development and practice at Harvard Kennedy School. It is comprised of a **set of tools and techniques for moving organizations, communities and teams beyond the status quo**, when “the way things are done around here” is no longer fit for purpose.



Improving coordination between siloed partners

December 8, 2022

Olivia Carlson, MSPH

Co-Chair, SBC for Service Delivery CoP
Program Officer II, Breakthrough ACTION /
JHCCP

**SOCIAL & BEHAVIOR CHANGE
FOR SERVICE DELIVERY**



**C O M M U N I T Y
O F P R A C T I C E**

Background

SBC for service delivery refers to using SBC processes and techniques to increase uptake and/or maintenance of health-service related behaviors among intended audiences



As of November 2022, the Service Delivery Community of Practice has

236 members from **36 different countries**.



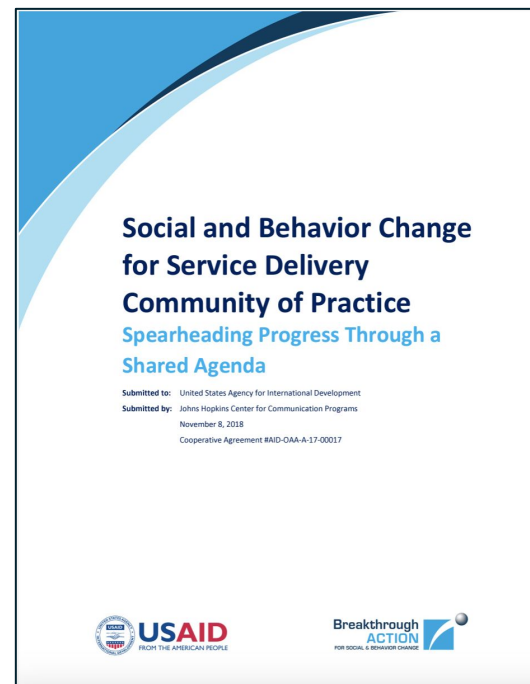
**SOCIAL & BEHAVIOR CHANGE
FOR SERVICE DELIVERY**
COMMUNITY OF PRACTICE

CoP Objectives

Establish and maintain a Shared Agenda to unite SBC and service delivery practitioners in RMCH around key priority areas.

Advance these priority areas by

- Sharing research, evidence, case studies, and best practices
- Developing programmatic tools and guidance
- Advocating for SBC for service delivery and setting the agenda
- Providing opportunities for professional development and SBC capacity strengthening



**SOCIAL & BEHAVIOR CHANGE
FOR SERVICE DELIVERY**
COMMUNITY OF PRACTICE

Gems

- ✓ In just a few years, the CoP has become a **cohesive community with a shared set of goals and desire to learn from one another**
- ✓ CoP members have developed **several joint deliverables** to meet the needs of CoP members and advance the field
- ✓ By request, **learnings from the CoP have been shared with groups interested in starting local chapters**

Key contributions



From Vision to Action:
Guidance for Implementing
the Circle of Care Model®

USAID Breakthrough ACTION

INDICATOR BANK

Indicator Type: ☐ Client Behavioral outcome ☐ Community ☐ Provider Behavioral outcome ☐ Individual ☐ Intermediate outcome ☐ Health service delivery ☐ Output ☐ Policy and environment ☐ Reach coverage

Indicator Level: ☐ Community ☐ Individual

Service Delivery Indicators Only: ☐ Yes ☐ No

Additional Key Terms: ☐ Yes ☐ No

Show 10 results

CONSTRUCT	INDICATOR	POTENTIAL DISAGGREGATION
Support of TB collaboration and coordination	Number of meetings that foster individual TB coordinator and	None

BEHAVIOR

Guiding **IMPACT** Evidence in Action behaviorchangeimpact.org

Demand, Comfort, and Continuity
Aligning service delivery and social and behavior change efforts to improve family planning outcomes



USAID Breakthrough ACTION

BEHAVIOR

Guiding **IMPACT** Evidence in Action behaviorchangeimpact.org

SBC Family Planning Evidence Database Brief
Circle of Care Social and Behavior Change Before Services



USAID Breakthrough ACTION

BEHAVIOR

Guiding **IMPACT** Evidence in Action behaviorchangeimpact.org

SBC Family Planning Evidence Database Brief
Circle of Care Social and Behavior Change During Services



USAID Breakthrough ACTION

BEHAVIOR

Guiding **IMPACT** Evidence in Action behaviorchangeimpact.org

SBC Family Planning Evidence Database Brief
Circle of Care Social and Behavior Change After Services



USAID Breakthrough ACTION



**SOCIAL & BEHAVIOR CHANGE
FOR SERVICE DELIVERY
COMMUNITY OF PRACTICE**

Sticky Issues

1. Ensuring membership reflects the global SBC and service delivery communities
2. Engagement in large, virtual meetings
3. Meaningful member contributions to voluntary activities



Thank you!

Olivia Carlson

olivia.carlson@jhu.edu

Website



**SOCIAL & BEHAVIOR CHANGE
FOR SERVICE DELIVERY**



**COMMUNITY
OF PRACTICE**



Social and Behaviour
Change Working Group



**SOCIAL & BEHAVIOR CHANGE
FOR SERVICE DELIVERY**
COMMUNITY OF PRACTICE



Panel Discussion

Small Group Discussions

Group 1

Creating value
and driving
impact

Group 2

Ensuring
representative
communities

Group 3

Ensuring
momentum
post- COVID

Group 4

Challenges of
navigating
multiple online
communities
and platforms



INTERNATIONAL
SBCC
SUMMIT 2022

Report Back & Closing



Boost is a global community where immunization professionals can connect with peers and experts, learn skills that build capacity, and lead in challenging contexts.



boostcommunity.org



Social and Behaviour
Change Working Group

The SBC Working Group is a forum to exchange malaria SBC best practices and experiences; mobilise political and technical resources; and promote the development of theory-informed, evidence-based programming at the country level.



www.bit.ly/RBMSBCWG



Springboard is an online community of SBC professionals who are passionate about making a difference in the world.



springboardforsbc.org



**SOCIAL & BEHAVIOR CHANGE
FOR SERVICE DELIVERY**
COMMUNITY OF PRACTICE

The SBC for Service Delivery Community of Practice is a group of professionals committed to improving the practice of integrating social and behavior change across the service continuum.



breakthroughactionandresearch.org/sbc-for-service-delivery-community-of-practice

