

Introduction

A dark teal, curved shape that starts from the bottom left and curves upwards and to the right, filling the bottom right portion of the slide.

**Hello everyone,
welcome to the
Interactive Video
screening**



**Thank you for taking the
time to participate in the
viewing of this video.**





**There are a few things
you need to be aware of
during this screening.**



First, the video is interactive, meaning you (the audience) influence the outcome of the story.

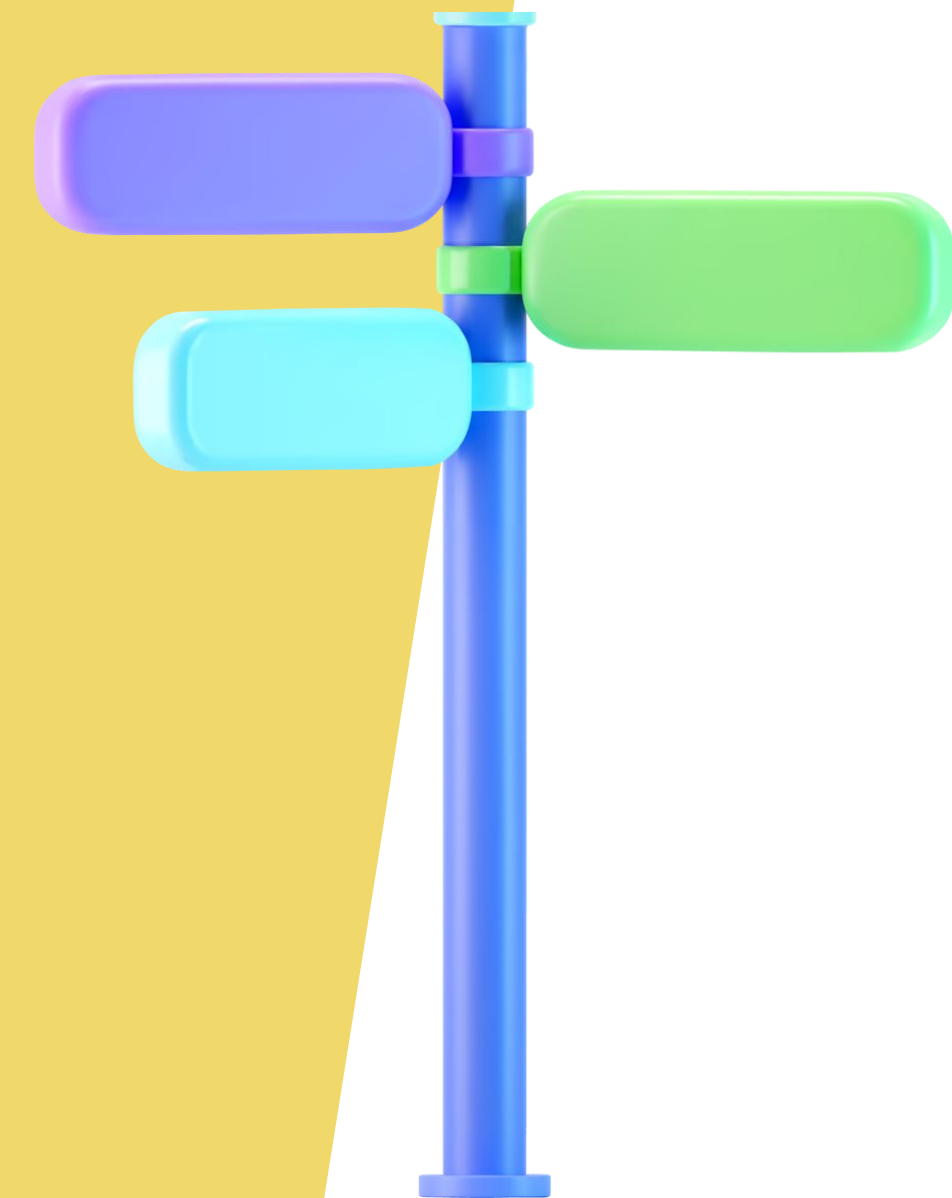


Second, the video will pause and show two options to choose from: A and B.





Third, this interactive video will be played in 3 parts. You can choose each decision point. There will be a discussion afterwards.



Choose the option that you think reflects what *actually* happens in your environment (not what you think *should* happen).

Remember, this video does not aim to test if you would pick the ideal scenario, but to choose according to what you think most likely happens most in your context.





Each viewer is free to make their own choices.

We kindly ask you to respect the choices of other viewers.

Finally, please enjoy this interactive video and embark on a journey to predict the future from the choices you make!





**You are the decider of
this storyline.**

Happy watching!